

Your Personalised Jaguar

JAGUAR F-TYPE

R-DYNAMIC 5.0 litre V8 450PS Supercharged Petrol (Automatic) Rear Wheel Drive

JAGUAR





EXTERIOR



EXTERIOR FEATURES

COLOURS	British Racing Green
WHEELS	20" Style 5060, 5 spoke, Gloss Sparkle Silver
BRAKES AND CALIPERS	Black brake calipers with 380mm front and 376mm rear brakes
ROOF COLOUR	Fixed panoramic roof
GLASS	Clear glass
HEADLIGHTS	Pixel LED headlights with signature DRL
SPOILER	Deployable boot lid spoiler



COLOURS



WHEELS



ROOF
COLOUR



GLASS



HEAD-
LIGHTS



SPOILER

EXTERIOR

EXTERIOR FEATURES

Black Exterior Pack

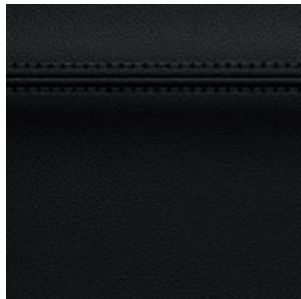
Gloss Black grille surround
Gloss Black side vents
Gloss Black side window surround
Black JAGUAR script and leaper
Black F-TYPE badge
Black engine badging
Black side vent leaper
Gloss Black splitter

INTERIOR

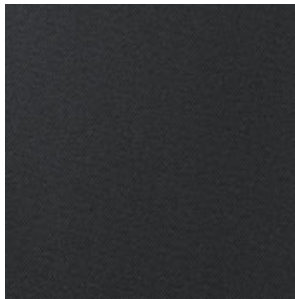


INTERIOR FEATURES

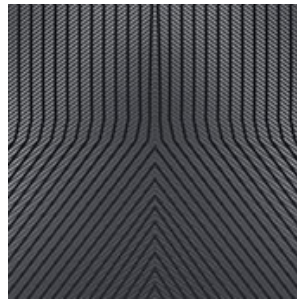
TRIM STYLE	Windsor leather sport seats
TRIM	Ebony Windsor leather sport seats with Ebony/Ebony interior
SEATING	Extended Leather Upgrade
SEAT FUNCTIONALITY	12-way heated electric memory front seats
HEADLINING	Ebony Morzine headlining
VENEER	Delta Aluminium centre console
CARPET MATS	Contrast carpet mats
MATERIAL	Leather steering wheel
HEATED	Heated steering wheel
AUDIO	Meridian™ Sound System



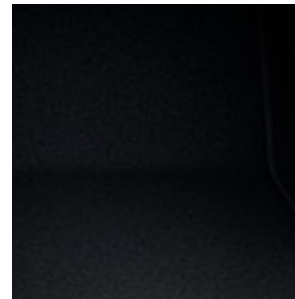
TRIM



HEADLINING



VENEER



CARPET
MATS



MATERIAL



HEATED

OPTIONS

PACKS

Blind Spot Assist Pack

Blind Spot Assist
Rear Traffic Monitor

ACCESSORY PACKS

Protection Pack

Rubber Mats RHD
Loadspace Semi-Rigid Liner

EXTERIOR FEATURES

Heated windscreen

Offers a quick and convenient way to defrost or demist the windscreen.

Auto-dimming, power fold, heated door mirrors with memory

These electrically adjustable auto-dimming mirrors reduce glare from following cars' headlights. The heating function removes frost and dew. Power Fold conveniently reduces the overall width of your F-TYPE and makes the mirrors less susceptible to damage. With Memory function you can program desired mirror positions and easily recall these settings at the touch of a button.

INTERIOR FEATURES

Electrically adjustable steering column with memory

With memory function you can program desired steering wheel positions and easily recall these settings at the touch of a button.

DRIVER ASSISTANCE

Park Assist

Park Assist makes parking easier than ever before, by automatically detecting available parking spaces and offering to park for you. At your command, your vehicle will complete the full parking manoeuvre automatically, while you simply sit back and keep an eye on the surroundings.

STANDARD FEATURES

EXTERIOR FEATURES

Rain sensing windscreen wipers	Solar attenuating windscreen	Heated, electric door mirrors
Flush exterior door handles	Reduced section alloy spare wheel	Powered boot lid
LED tail lights	JAGUAR script and leaper	F-TYPE badge
Switchable Active Exhaust	Quad outboard mounted exhaust pipes	

DYNAMICS

Configurable Dynamics	Adaptive Dynamics	Electronic Active Differential with Torque Vectoring by Braking
Rain, Ice, Snow Mode	Dynamic Stability Control (DSC)	Electric Parking Brake (EPB)
Anti-lock Braking System (ABS)	Electronic Brake-force Distribution (EBD)	

INTERIOR FEATURES

Metal treadplates with Jaguar script	Electrically adjustable steering column	Sunvisors with vanity mirrors
Auto-dimming interior rear view mirror	Overhead lighting console	Deployable front air vents
Cabin lighting	Single-zone Climate Control	Pollen filter
Twin front cupholders	Low line cubby box	Bright metal pedals
Silver gearshift paddles		

INFOTAINMENT

10" Touch Pro	Interactive Driver Display	Connected Navigation Pro
Online Pack	Android Auto™	Apple CarPlay®
Remote	Bluetooth® connectivity	Power socket(s)
USB and 12V socket in centre console		

SAFETY AND SECURITY

Emergency Brake Assist	Remote central locking with deadlocks and drive-away locking	Perimetric alarm and immobiliser
Valet Mode	6 airbags	

DRIVER ASSISTANCE

Rear Camera	Lane Keep Assist	Front and Rear Parking Aid
Cruise Control and Speed Limiter	Keyless Entry	Boot entrapment release lever
Push Button Start	Driver Condition Monitor	

TECHNICAL SPECIFICATIONS

PERFORMANCE

Maximum speed km/h (mph)	285 (177)
Acceleration (secs) 0-100 km/h (0-60mph)	4,6 (4,4)

FUEL ECONOMY

Combined WLTP Consumption - l/100km (mpg)	10,3 - 10,5 (27,4 - 26,9)††
Combined WLTP CO ₂ Emissions - g/km	236 - 240††
Tank capacity (litres approx.)	70

POWERTRAIN

Maximum power (PS/kW/rpm)	450/331/6.000
Maximum torque (Nm/rpm)	580/2.500-5.000
Transmission	Automatic
Capacity (cc)	5.000

WEIGHTS

Unladen weight (EU) (kg) - Includes a 75kg driver, full fluids and 90% fuel	1.781
Unladen weight (DIN) (kg) - Includes full fluids and 90% fuel	1.706
Gross Vehicle Weight (GVW) (kg)	2.050

DIMENSIONS

Height (mm)	1.311
Length (mm)	4.470
Width with mirrors folded (mm)	1.923
Width with mirrors out (mm)	2.042
Front wheel track (mm)	1.584
Rear wheel track (mm)	1.628
Wheelbase (mm)	2.622

HEADROOM

Maximum front headroom with standard roof (mm)	935
Maximum front headroom with panoramic roof (mm)	926

LEGROOM

Maximum front legroom (mm)	1.088
----------------------------	-------

LOADSPACE CAPACITY

Height (mm)	548
Width (mm)	1.269

TECHNICAL SPECIFICATIONS

LOADSPACE CAPACITY

Width between arches (mm)	892
Maximum loadspace volume - Dry (litres)	336◇
Maximum loadspace volume - Wet (litres)	509◆

GROUND CLEARANCE

Standard ride height (mm)	100
---------------------------	-----

TURNING CIRCLE

Kerb-to-kerb (m)	10,63
Wall-to-wall (m)	11
Turns lock-to-lock (no. of turns)	2,34

YOUR CONFIGURATION

https://buildyour.jaguar.com/jag2/r/summary/_/en_xi/f-type_k24/4b48h/a-50p-450-a_a-cecpbs_a-f-type_rd0/a-wlss_n-017th_n-031fl_n-032dv_n-032mb-cprd_n-040ak_n-041cx_n-070ca_n-086mb_n-1al_n-300je_t2r16568pvj-t2r11244



[††View WLTP figures](#)

The figures provided are as a result of official manufacturer's tests in accordance with EU legislation. For comparison purposes only. Real world figures may differ. CO₂ and fuel economy figures may vary according to factors such as driving styles, environmental conditions, load, wheel fitment and accessories fitted.

◇1,584 on 20" wheels.

◆1,628 on 20" wheels.

◇Dry: Volume as measured with VDA-compliant solid blocks (200mm x 50mm x 100mm).

◆Wet: Volume as measured by simulating the loadspace filled with liquid.

- [International Sites](#)
- [Sitemap](#)
- [Terms and Conditions](#)
- [Cookie and Privacy Policy](#)
- [Accessibility Statement](#)
-

© Jaguar Land Rover Limited 2023: Registered office: Abbey Road, Whitley, Coventry CV3 4LF. Registered in England No: 1672070

Important note on imagery & specification. We are living through exceptional times. Due to the Covid pandemic we have been prevented or delayed in the creation of new images of current model years. Now the global impact of micro-chip shortages is further affecting build specifications, options and launch timings. Until this unique event settles, please note that **many images cannot be updated to 22/23 model year specifications.** Features, options, trim and colour schemes will differ from many images. Customers are urged to consult your local Retailer for detailed 22/23 model year specifications and do not base an order on marketing imagery and specification alone.

Jaguar Land Rover Limited is constantly seeking ways to improve the specification, design and production of its vehicles, parts and accessories and alterations take place continually, and we reserve the right to change without notice. Some features may vary between optional and standard for different model years. The information, specification, engines and colours on this website are based on European specification and may vary from market to market and are subject to change without notice. Some vehicles are shown with optional equipment and retailer-fit accessories that may not be available in all markets. Please contact your local retailer for local availability and prices.

[VIEW REGULATION \(EU\) 2020/740 PDF](#)

JAGUAR

<http://www.jaguar.com>